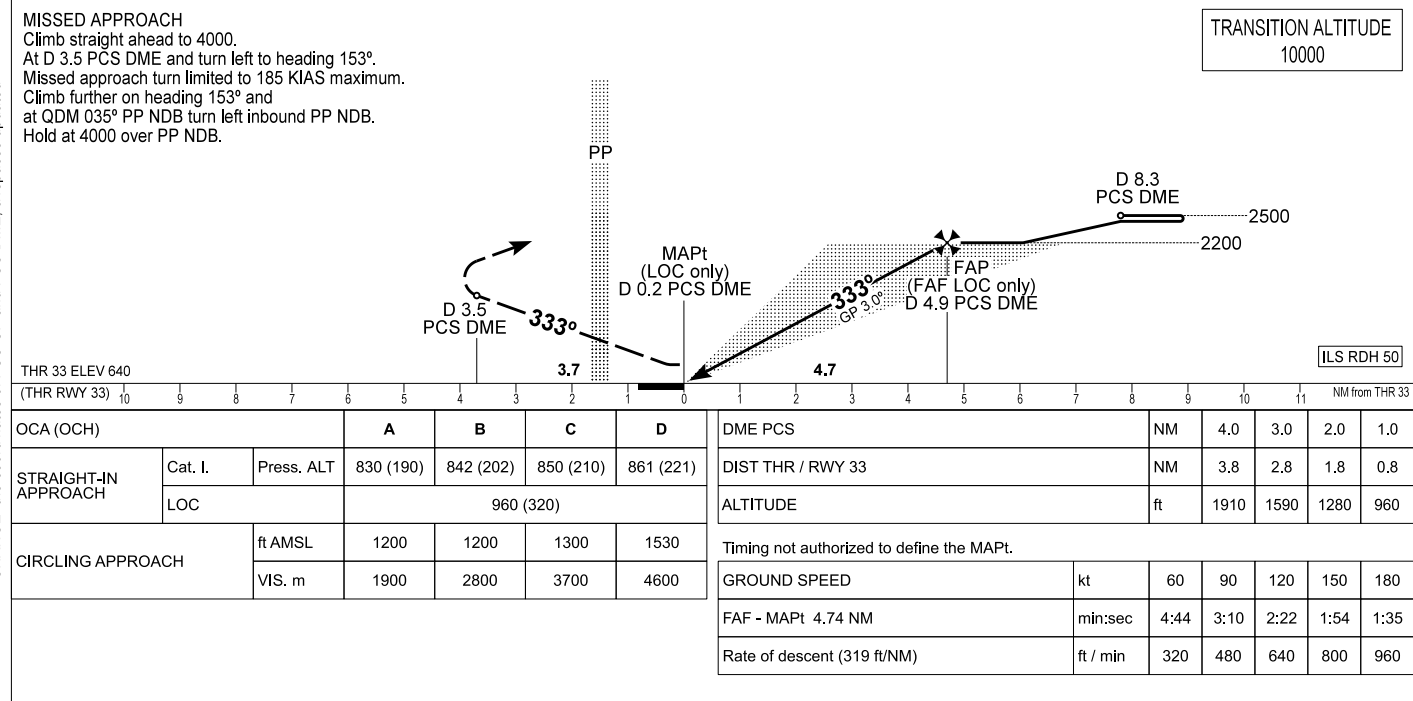


AERODROME ELEV 651
HEIGHTS RELATED TO
THR RWY 33 - ELEV 640

PÉCS/POGÁNY
ILS or LOC RWY 33
(ACFT CAT A, B, C, D)



AD 2 LHPP INSTRUMENT APPROACH CHART ILS OR LOC RWY 33

Arrivals on 138° - 198° may enter the base turn procedure directly at 4000
above PP NDB according to the advice of POGÁNY INFO.
Other arrivals shall enter the holding procedure.

ILS approach from PP NDB:

Initial altitude: 4000. 185 KIAS max.

Leave PP NDB on QDR 168 and descend to 2500.

At D 8.3 PCS DME turn left to intercept PCS LOC 333° and descend to 2200, then follow ILS.

ILS approach from PP NDB holding:

Initial altitude: 4000. 185 KIAS max.

At PP NDB turn left to heading 153° and descend to 2500.

Fly outbound and at D 8.3 PCS DME turn left to intercept PCS LOC 333° and descend to 2200, then follow ILS.

Holding procedure:

Holding fix: PP NDB.

Left hand holding pattern.

Inbound track: 333°

Outbound track: 153°

Rate of turn: 3°/sec. or 25° bank angle
(whichever requires lesser bank)

Outbound timing: 1 min.

Minimum holding altitude: 4000

Final approach descent (LOC only): 3.00°